



*"Some see dreams, we make them a reality.
At Ralhan Constructions, we turn visions into success."*

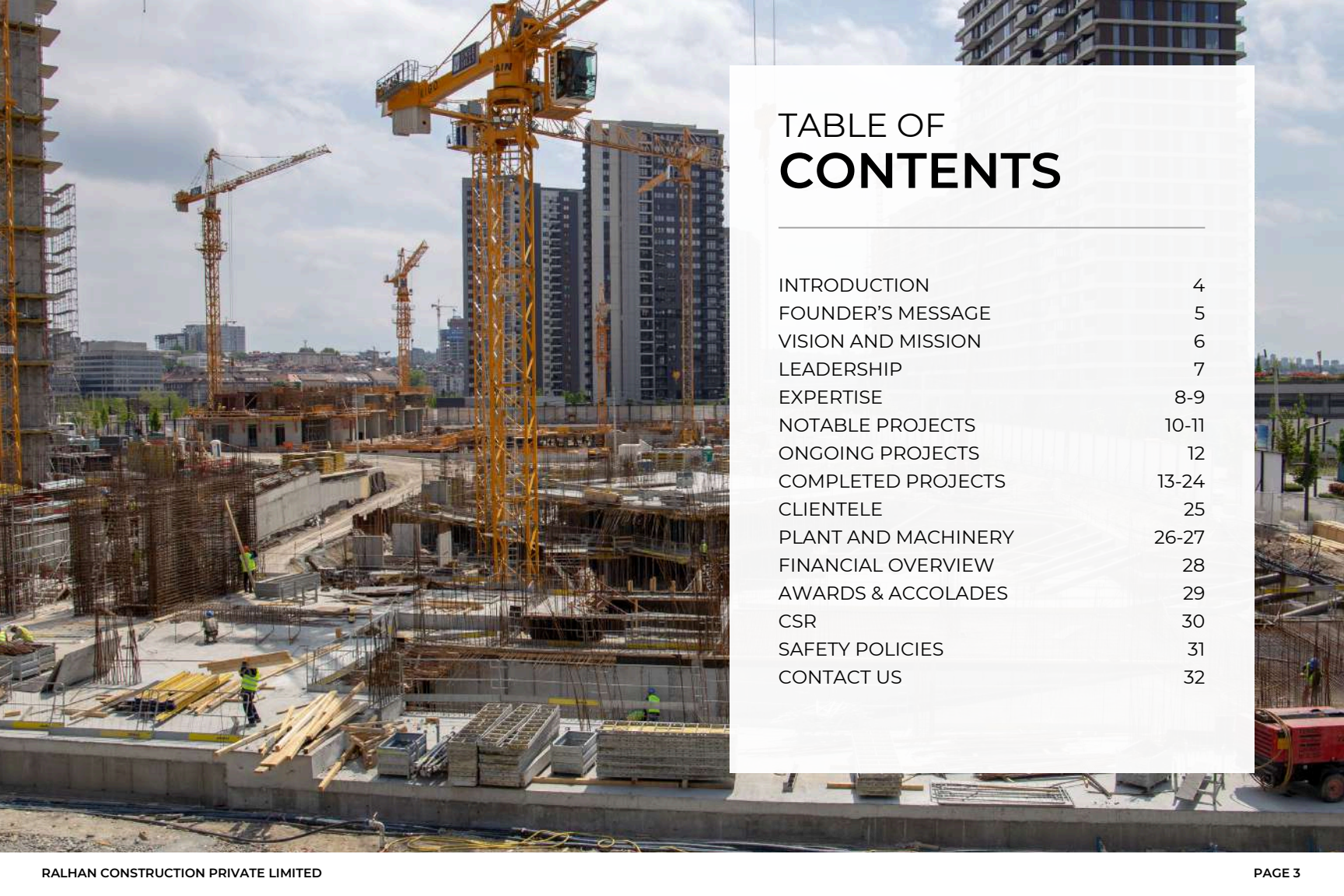


TABLE OF CONTENTS

INTRODUCTION	4
FOUNDER'S MESSAGE	5
VISION AND MISSION	6
LEADERSHIP	7
EXPERTISE	8-9
NOTABLE PROJECTS	10-11
ONGOING PROJECTS	12
COMPLETED PROJECTS	13-24
CLIENTELE	25
PLANT AND MACHINERY	26-27
FINANCIAL OVERVIEW	28
AWARDS & ACCOLADES	29
CSR	30
SAFETY POLICIES	31
CONTACT US	32

INTRODUCTION

Ralhan Construction stands as a premier name in civil construction across North India, with a legacy spanning more than six decades. Since our establishment in 1965, we have maintained consistent growth and financial stability, emerging as one of North India's most reputable and dynamic civil engineering construction contractors.

60

OVER 60 YEARS OF
UNMATCHED EXCELLENCE
AND LEGACY

120

MORE THAN A HUNDRED
PROJECTS DONE AND
DUSTED

94M

94 MILLION SQUARE FEET
OF LAND CONSTRUCTED
TILL DATE

20+

MORE THAN 20 AWARDS
AND ACCOLADES
RECEIVED



FOUNDER'S MESSAGE

In 1965, when I first envisioned Ralhan Construction, it wasn't merely to build structures — it was to build something far more enduring: trust. With humble beginnings and a clear purpose, I set out to create a company that would deliver quality, stand by its word, and uphold integrity in every action.

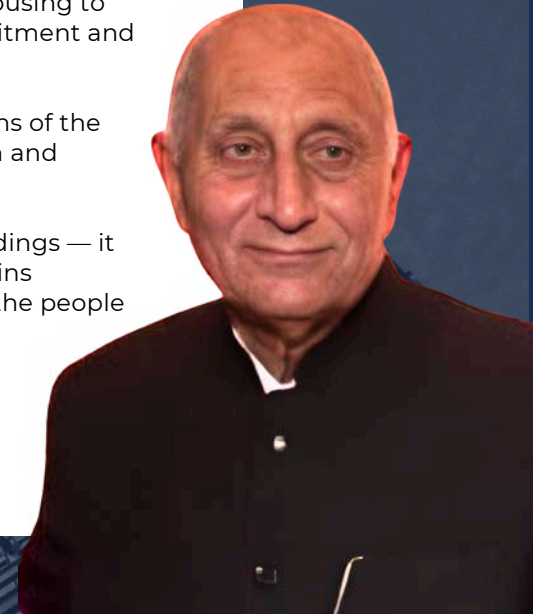
Our success is not just measured in concrete and steel — but in the relationships we've built, the lives we've touched, and the landmarks we've created. From national institutions to sacred spaces, from modern housing to monumental memorials — our work stands as a testament to commitment and craftsmanship.

I take immense pride in the fact that the second and third generations of the Ralhan family have carried forward this legacy with the same passion and dedication.

I've always believed that a good foundation doesn't just support buildings — it supports generations. Our journey is still unfolding — but what remains constant is our commitment to excellence and our deep respect for the people we work with.

Thank you for trusting us over the decades.

Lal Chand Ralhan
FOUNDER & CHAIRMAN





VISION

"To be a benchmark in construction excellence by blending tradition with innovation, and building spaces that inspire trust for generations."

As we step into the future, our aim is to expand beyond Delhi-NCR, adopt sustainable building practices, and continue developing landmark projects that shape India's urban story.

At Ralhan Construction Pvt. Ltd., our mission is to build lasting value through quality construction, engineering excellence, and ethical practices.

We strive to deliver every project with precision, professionalism, and accountability, ensuring client satisfaction while contributing meaningfully to the nation's infrastructure.

With a deep respect for our legacy and a forward-looking approach, we aim to set new benchmarks in safety, sustainability, and innovation across every structure we create.

MISSION

LEADERSHIP & SENIOR MANAGEMENT



Lal Chand Ralhan
FOUNDER & CHAIRMAN



Sanjeev Ralhan
JOINT MANAGEMENT
DIRECTOR



Praveen Ralhan
JOINT MANAGEMENT
DIRECTOR



Sahir Ralhan
EXECUTIVE DIRECTOR



Shrey Ralhan
EXECUTIVE DIRECTOR

At the helm of Ralhan Construction Pvt. Ltd. is a multigenerational leadership team—visionaries and executors—who blend legacy values with forward-thinking strategies. Each member brings deep technical insight, administrative excellence, and a hands-on approach to project delivery.



DESIGN & BUILD SOLUTIONS

Ralhan Construction Private Limited (RCPL) offers end-to-end design-build services tailored for major construction companies seeking a trusted execution partner. Our integrated approach combines in-house expertise with proven project delivery capabilities.

CIVIL INFRASTRUCTURE PROJECTS

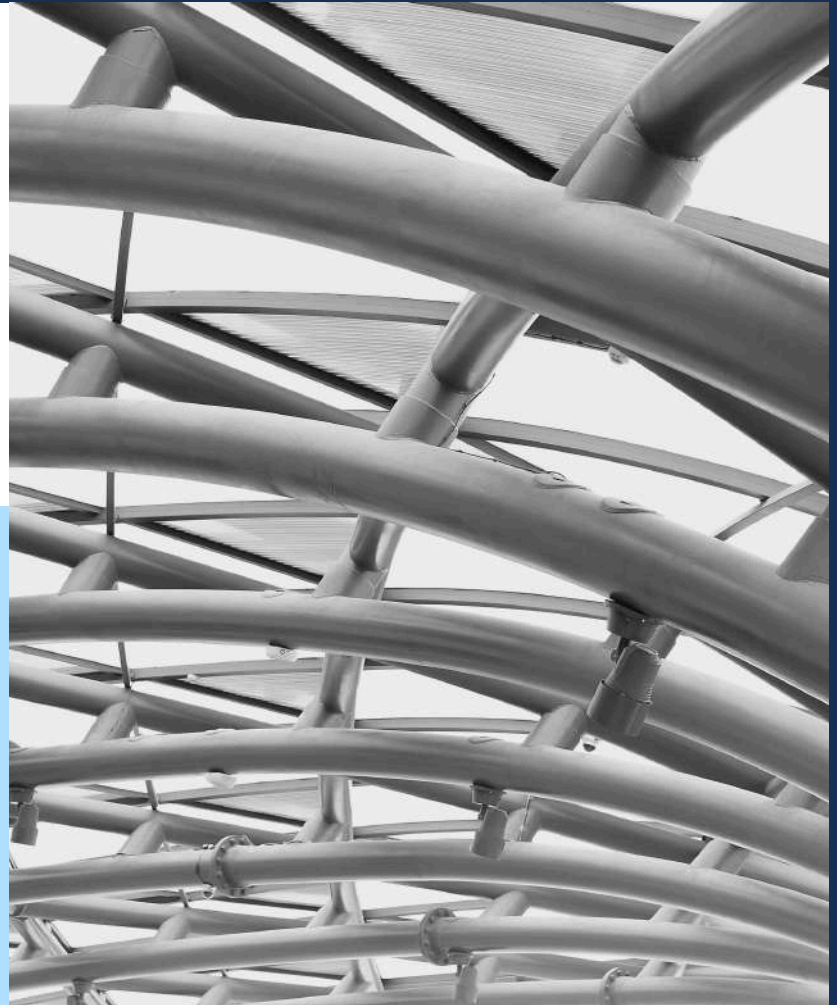
Our distinguished team comprises experienced structural engineers, civil engineers, and architects, supported by a extensive workforce trained to deliver massive projects within ambitious timelines.

ELECTRICAL & MECHANICAL PROJECTS

Ralhan Construction Private Limited (RCPL) employs elite teams of structural, civil, and electrical engineers to execute mechanical and electrical projects of any scale throughout India.

ADVANCED STEEL CONSTRUCTION SOLUTIONS

Our expertise in structural steel construction combines cutting-edge CAD design with masterful execution. We create steel structures that perfectly balance strength, cost-effectiveness, and architectural aesthetics.



NOTABLE PROJECTS

Over the past six decades, Ralhan Construction Pvt. Ltd. has played a pivotal role in shaping the architectural and infrastructural landscape of India.

Our portfolio features a diverse range of landmark projects — from prestigious government institutions and heritage restorations to high-scale residential and commercial developments.

Honorable **Supreme Court of India** in Delhi

[Check out more project details →](#)



Moolchand Hospital in Delhi

[Check out more project details →](#)



Safdurjung Hospital in Delhi

[Check out more project details →](#)



Shakti Sthal Rajghat in Delhi

[Check out more project details →](#)



ISKCON Temple Rohini in Delhi

[Check out more project details →](#)



MTNL Officers Residential Flats in Delhi

[Check out more project details →](#)



Narmada Hostel JNU in Delhi

[Check out more project details →](#)



Each project showcases our deep-rooted commitment to engineering excellence, timely delivery, and uncompromising quality.

Whether it's the grandeur of the Supreme Court building, the precision of Safdarjung Hospital's OPD, or the spiritual intricacy of the ISKCON Temple, our work reflects the trust placed in us by our clients — and our ability to deliver structures that stand the test of time.

PROJECTS | ONGOING

● At Wave City, Ghaziabad



CLUB AT WAVE CITY

● At World Street Sector 79, Faridabad



OMAXE HI-FUN COMMERCIAL MALL

● At Sector 82, Faridabad



AMOLIK VIBRANTE 82

● At Sector 103, Gurugram



INSTITUTE OF BUSINESS MANAGEMENT
AND AGRIPRENEURSHIP

● At Sector 57 Gurgaon



HOPE BUILDCON, URBAN COMPLEX

PROJECTS | RESIDENTIAL



SG INDIGO & IVORY



MULTISTORIED HOUSING FOR SG
ESTATES,



MULTISTORIED HOUSING FOR
SIGNATURE HEIGHTS



BARRACKS AT CRPF CAMP



SCHOOL OF INTERNATIONAL STUDIES
AT JNU COMPLEX



MP FLATS FOR RAJYA SABHA AT BT
MARG

PROJECTS | RESIDENTIAL



OFFICERS FLATS AT GROUP CENTER
FOR CRPF



UPGRADATION OF 110 NOS. TYPE 3 QTRS



ADMIN BLOCK, HOSTEL BLOCK, YOGA
CENTER & OFFICERS FLATS



SHAKTI STHAL FOR SMT. INDIRA
GANDHI



ELDECO OLYMPIA



ELDECO INSPIRE, PHASE 2

PROJECTS | RESIDENTIAL



ELDECO INSPIRE, PHASE 1



ELDECO MAGNOLIA



ELDECO EDGE



ELDECO SYLVAN VIEW



RESIDENCE'S FOR SENIOR CITIZENS



MULTISTORIED HOUSING FOR
SIGNATURE HOMES

PROJECTS | RESIDENTIAL



OFFICERS FLATS FOR MTNL



HOUSING TOWERS, MTNL SENIOR
OFFICERS FLATS SEVEN STORY



● At MAGNOLIA for Eldeco, Sec 119
Noida, U.P. JV

ELDECO MAGNOLIA PARK (MULTI
STORIED HOUSING)



LOW RISE HOUSING FOR OAKLAND/
GOLDEN ESTATES-FARIDABAD

PROJECTS | COMMERCIAL



SCO's AT OMAXE WORLD STREET



COMMERCIAL COMPLEX AT FOR
DALMIA CEMENTS



TELEPHONE EXCHANGE FOR MTNL



MTNL EXCHANGE SARASWATI VIHAR



MTNL EXCHANGE SARITA VIHAR



MTNL EXCHANGE ROHINI SECTOR 9

PROJECTS | COMMERCIAL



MTNL EXCHANGE SHADIPUR



MTNL EXCHANGE SECTOR 6 DWARKA



MTNL EXCHANGE HARI NAGAR



NHAI OFFICE BUILDING



RAHEJA EXPO MALL PANIPAT

PROJECTS | HOSPITAL



HOSPITAL AT CRPF CAMP



HOSPITAL CUM POLY CLINIC FOR GOVT EMPLOYEES



MOOL CHAND HOSPITAL, LAJPAT NAGAR



INDIRA GANDHI ESI HOSPITAL



NEW OPD BLOCK AT SAFDARJUNG HOSPITAL, NEW DELHI. CPWD

PROJECTS | INDUSTRIAL



AUTOMOBILE WORKSHOP CUM ADMIN
BUILDING FOR MTNL



OFFICE CUM FACTORY BUILDING FOR
REGENCY CREATIONS

PROJECTS | INSTITUTIONAL



CENTRAL VIGILANCE COMMISSION
OFFICE



FIRE STATION BUILDING AT DELHI
INTERNATIONAL AIRPORT



ACADEMIC BLOCK FOR CDAC



CEMENT MANUFACTURERS
ASSOCIATION OFFICE



NARMADA HOSTEL AT JNU COMPLEX,
NEW DELHI M/S C.P. KUKREJA.



CGO, GPO OFFICE BUILDING

PROJECTS | INSTITUTIONAL



SPG WORKS, PRIME MINISTER HOUSE,
RACE COURSE



PARLIAMENT LIBRARY BUILDING
SUPPLY OF STONE JALLIS



HON'BLE SUPREME COURT OF INDIA
(NEW & FINAL EXTENSION)



IGNOU PERIPHERY ROAD, BY CUTTING
ROCKS AND DEVELOPING ROADS



CSD FOR MTNL



NULON HOUSE NULON GROUP

PROJECTS | INSTITUTIONAL



NARELA SCHOOL BUILDING, PWD



ACADEMIC BLOCK FOR CDAC

PROJECTS | OTHERS



GURU TEG BAHADUR MEMORIAL



ISKCON TEMPLE BUILDING



ROAD WORKS FOR COMMON
WEALTH GAMES 2010

CLIENTS

Over the past six decades, Ralhan Construction Pvt. Ltd. has played a pivotal role in shaping the architectural and infrastructural landscape of India. Our portfolio features a diverse range of landmark projects — from prestigious government institutions and heritage restorations to high-scale residential and commercial developments.

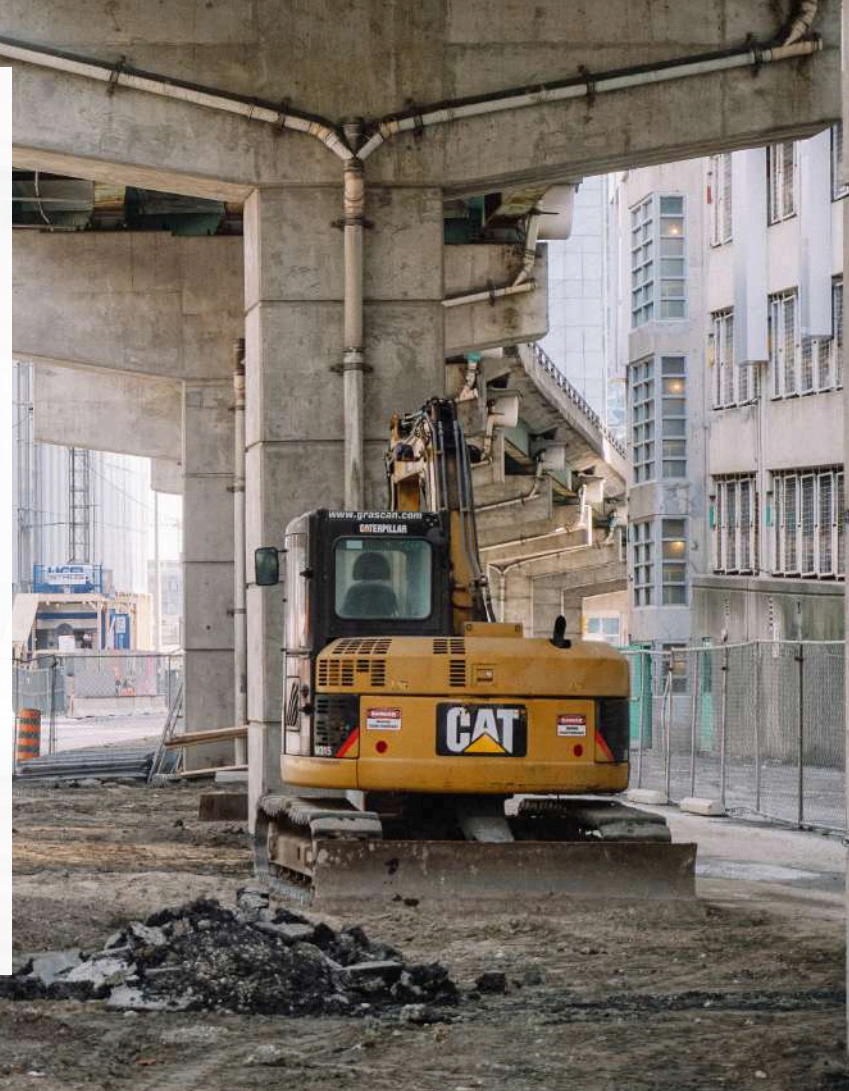




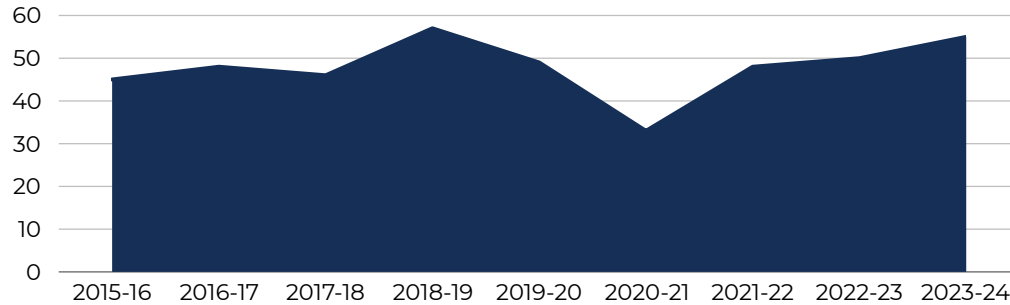
PLANT & MACHINERY

• CONCRETE PUMP	4 No's
• BUILDERS HOIST	12 No's
• TOWER CRANE	4 No's
• CONCRETE WEIGH BATCHER/MIXERS	18 No's
• EXCAVATOR POCLAIN MODEL 20TON	5 No's
• EXCAVATOR POCLAIN MODEL 20TON	10 No's
• TIPPERS (MULTI-AXELTATA)	2 No's
• STEEL SHUTTERING	24000 Sqm
• TELESCOPICS PANS & CHANNELS	7200 No's
• STEEL PROPS 3X2 , 3X3	12000 No's
• STEEL SCAFFOLDING LEDGER VERTICAL	22000 No's
• MORTER MIXER & NEEDLE VIBRATOR(OIL)	25 No's
• NEEDLE VIBRATOR (ELECTRIC)	25 No's
• PLATE VIBRATOR	7 No's

• SHUTTERING VIBRATOR	6 No's
• VIBRO COMPACTOR	2 No's
• FULLY AUTOMATIC BATCHING PLANT	2 Sets
• CHASE CUTTING MACHINES	4 Sets
• TOTAL STATION	2 No's
• EARTH COMPACTOR	1 No's
• STONE CUTTING MACHINE	4 No's
• TABLE VIBRATOR	2 No's
• BARBINDING & CUTTINGM/C (SET)	20 No's
• HILTACHI SELERS	5 No's
• SILENT GENERATORS CUMMINSN LEYLAND	15 No's
• WELDING M/C	25 No's
• CUBETESTINGM / CELECTRIC	5 No's
• THEODOLITE	5 No's
• AUTO LEVEL & CONVENTIONAL LEVELING M/C	10 No's



FINANCIAL OVERVIEW



FINANCIAL YEAR 2015-16	45.02 Crore
FINANCIAL YEAR 2016-17	47.77 Crore
FINANCIAL YEAR 2017-18	45.65 Crore
FINANCIAL YEAR 2018-19	56.50 Crore
FINANCIAL YEAR 2019-20	49.29 Crore
FINANCIAL YEAR 2020-21	33.14 Crore
FINANCIAL YEAR 2021-22	48.36 Crore
FINANCIAL YEAR 2022-23	50.20 Crore
FINANCIAL YEAR 2023-24	55.32 Crore

AWARDS & ACCOLADES

At Ralhan Construction Pvt. Ltd., recognition is not just a measure of our accomplishments — it's a testament to the unwavering commitment, discipline, and quality we bring to every project.

Over the decades, our work has garnered appreciation from government bodies, esteemed institutions, industry peers, and clients alike.



**ALL INDIA BUILDERS
CONVENTION**

Ralhan Construction received recognition at this prestigious event for its excellence and contributions to the construction industry.



**ALL INDIA BAI
CONVENTION**

Ralhan Construction received recognition at this national convention for its excellence in construction and project execution.



**BAI (BUILDERS
ASSOCIATION OF INDIA)**

Ralhan Construction received honors from BAI for its commitment to quality, innovation, and industry leadership.



**NATIONAL DISASTER
RESPONSE FORCE**

Ralhan Construction received accolades for its efforts in disaster-resilient construction and safety compliance.



**ISO CERTIFICATION
9001:2000**

Ralhan Construction received this globally recognized certification for maintaining high-quality standards in its construction processes.



CORPORATE SOCIAL RESPONSIBILITY

At Ralhan Constructions, we believe that building strong communities is just as important as building strong structures. Our commitment to Corporate Social Responsibility is woven into the fabric of our business, guiding us to contribute meaningfully to society and the environment.

We actively engage in initiatives that promote education, healthcare, environmental sustainability, and community development. From supporting local schools and healthcare facilities to adopting eco-friendly construction practices, we strive to create a positive impact that extends beyond our project sites.

Our CSR philosophy is rooted in giving back to the communities we work in, nurturing future generations, and preserving natural resources for a better tomorrow.

SAFETY AND SECURITY POLICIES

The safety of every individual on-site is the highest priority. Strict health, safety, and fire protection standards are maintained across all operations to ensure a secure working environment.

Comprehensive safety training, routine audits, and continuous risk assessments are carried out to prevent accidents and promote a culture of awareness and responsibility.

Personal protective equipment (PPE) is mandatory for all workers, and emergency response plans are clearly communicated and regularly rehearsed through drills. Special emphasis is placed on early hazard detection, swift corrective action, and ongoing education at every level of the organization.

Fire safety protocols are deeply integrated into every project.





REGISTERED OFFICE

Lower Ground Floor
S-44, Greater Kailash
Part II, Delhi, New Delhi –
110048

PHONE

98100 53509
98100 58504
98100 53503

LANDLINE

011-41025882

EMAIL

info@ralhanconstruction.com

WEBSITE

ralhanconstruction.com

LINKEDIN

linkedin.com/ralhanconstruction

INSTAGRAM

instagram.com/ralhanconstruction